

ing for the
ted in the eastern
Road as well as
y N 51°25'32" E
of this ending

ation of rights to
l in Deed Book 122
the Register's
moose.

g for Tracts 1 & 2 is a 3/4'
boundary of this parcel
ht-of-way of Carl Rogers
ted N 47°15'50" E 25.01'

Tract #3 is a 5/8'
rebar
stem corner of this
return right-of-way of Carl
ing located N 17°15'11" W
ator.

record reviewed and
his survey is noted hereon.
on the current deed of
across a title search or a
subject to any state of
unite title search will reveal
y as shown hereon is
surveyor is presented with
ficient information or
heron and deemed
the correct boundary line.
vey. There is absolutely
to the existence or
wing; wetlands; easements
otherwise noted hereon;
streams above ground
which are clearly shown
on buildings, structures,
other than those which are
l as such horses; flood
zones unless otherwise
or land features that could

on is subject to
l is subject to change
ence. (LA, Huffines,
n, ponds, inlets of

to subject to utility
ht-of-way.

nable for any
s of any underground
l including but not limited
done, physical devices and
and shall not be
y that may arise out of
o make such determination
fairs conditions. For
on call 1-800-351-1111 (TN

is a category II & IV survey
olon of the unadjusted
500 as shown hereon and
mplyance with current
relate of Tract(s).
representations are
nots of the surveyor's

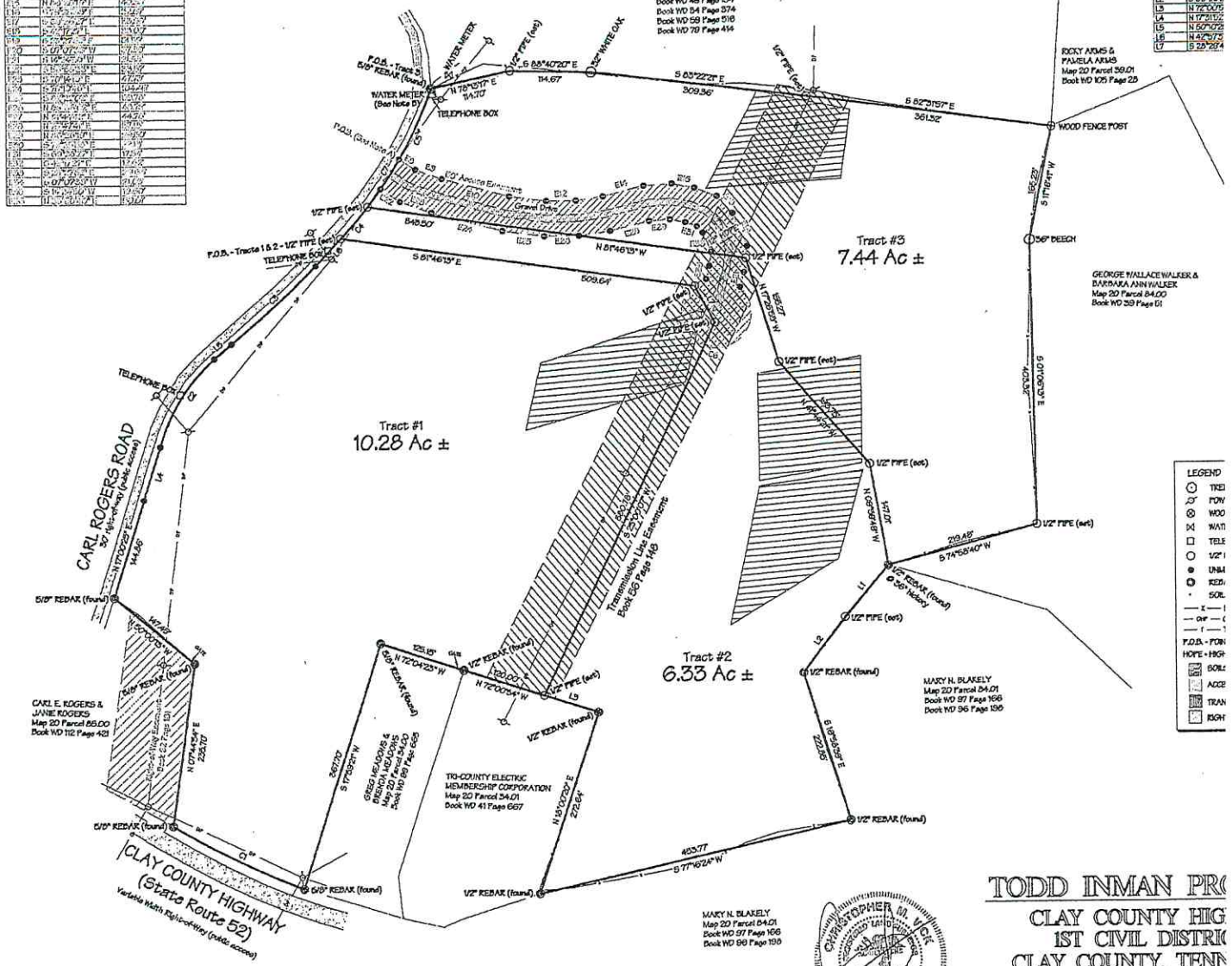
v 23-10561

LINE	BEARING	LENGTH
1	N 89°00'00" E	144.67
2	S 00°22'23" E	309.36
3	S 82°21'57" E	361.32
4	S 01°00'00" E	403.00
5	S 74°55'40" W	203.45
6	S 89°00'00" W	222.84
7	S 77°45'24" W	453.77
8	S 17°45'24" W	577.62
9	S 00°00'00" W	222.84
10	S 00°00'00" W	222.84
11	S 00°00'00" W	222.84
12	S 00°00'00" W	222.84
13	S 00°00'00" W	222.84
14	S 00°00'00" W	222.84
15	S 00°00'00" W	222.84
16	S 00°00'00" W	222.84
17	S 00°00'00" W	222.84
18	S 00°00'00" W	222.84
19	S 00°00'00" W	222.84
20	S 00°00'00" W	222.84
21	S 00°00'00" W	222.84
22	S 00°00'00" W	222.84
23	S 00°00'00" W	222.84
24	S 00°00'00" W	222.84
25	S 00°00'00" W	222.84
26	S 00°00'00" W	222.84
27	S 00°00'00" W	222.84
28	S 00°00'00" W	222.84
29	S 00°00'00" W	222.84
30	S 00°00'00" W	222.84
31	S 00°00'00" W	222.84
32	S 00°00'00" W	222.84
33	S 00°00'00" W	222.84
34	S 00°00'00" W	222.84
35	S 00°00'00" W	222.84
36	S 00°00'00" W	222.84
37	S 00°00'00" W	222.84
38	S 00°00'00" W	222.84
39	S 00°00'00" W	222.84
40	S 00°00'00" W	222.84
41	S 00°00'00" W	222.84
42	S 00°00'00" W	222.84
43	S 00°00'00" W	222.84
44	S 00°00'00" W	222.84
45	S 00°00'00" W	222.84
46	S 00°00'00" W	222.84
47	S 00°00'00" W	222.84
48	S 00°00'00" W	222.84
49	S 00°00'00" W	222.84
50	S 00°00'00" W	222.84
51	S 00°00'00" W	222.84
52	S 00°00'00" W	222.84
53	S 00°00'00" W	222.84
54	S 00°00'00" W	222.84
55	S 00°00'00" W	222.84
56	S 00°00'00" W	222.84
57	S 00°00'00" W	222.84
58	S 00°00'00" W	222.84
59	S 00°00'00" W	222.84
60	S 00°00'00" W	222.84
61	S 00°00'00" W	222.84
62	S 00°00'00" W	222.84
63	S 00°00'00" W	222.84
64	S 00°00'00" W	222.84
65	S 00°00'00" W	222.84
66	S 00°00'00" W	222.84
67	S 00°00'00" W	222.84
68	S 00°00'00" W	222.84
69	S 00°00'00" W	222.84
70	S 00°00'00" W	222.84
71	S 00°00'00" W	222.84
72	S 00°00'00" W	222.84
73	S 00°00'00" W	222.84
74	S 00°00'00" W	222.84
75	S 00°00'00" W	222.84
76	S 00°00'00" W	222.84
77	S 00°00'00" W	222.84
78	S 00°00'00" W	222.84
79	S 00°00'00" W	222.84
80	S 00°00'00" W	222.84
81	S 00°00'00" W	222.84
82	S 00°00'00" W	222.84
83	S 00°00'00" W	222.84
84	S 00°00'00" W	222.84
85	S 00°00'00" W	222.84
86	S 00°00'00" W	222.84
87	S 00°00'00" W	222.84
88	S 00°00'00" W	222.84
89	S 00°00'00" W	222.84
90	S 00°00'00" W	222.84
91	S 00°00'00" W	222.84
92	S 00°00'00" W	222.84
93	S 00°00'00" W	222.84
94	S 00°00'00" W	222.84
95	S 00°00'00" W	222.84
96	S 00°00'00" W	222.84
97	S 00°00'00" W	222.84
98	S 00°00'00" W	222.84
99	S 00°00'00" W	222.84
100	S 00°00'00" W	222.84

POINT	PARCEL	ACRES	OWNER	DEED	BOOK	PAGE
1	1	10.28	CARL ROGERS & JAVIE ROGERS	Map 20 Parcel 35.00	Book WD 85 Page 684	
2	2	6.33	CARL ROGERS & JAVIE ROGERS	Map 20 Parcel 35.00	Book WD 85 Page 684	
3	3	7.44	CARL ROGERS & JAVIE ROGERS	Map 20 Parcel 35.00	Book WD 85 Page 684	

CURVE	RADIUS	ARC LENGTH	CHORD LENGTH
C1	1160.26'	207.78'	207.52'
C2	1242.88'	141.42'	140.16'
C3	1498.78'	164.60'	164.60'
C4	677.19'	159.50'	159.77'
C5	672.28'	152.47'	151.66'

LINE	BEARING
L1	S 40°22'53" E
L2	S 35°09'52" E
L3	N 17°22'00" W
L4	N 17°21'12" W
L5	N 50°27'25" E
L6	N 42°22'00" E
L7	S 22°25'24" E



LEGEND

- TIE
- FOW
- WOOD
- WAT
- TELE
- 1/2" PIPE
- UNL
- REBAR
- SOL
- E —
- OF —
- I —
- F.O.A. - F.O.W.
- HOPE - HOH
- ACCE
- TRAN
- ROH



TODD INMAN PRO
CLAY COUNTY HIGH
1ST CIVIL DISTRICT
CLAY COUNTY, TENN
DATE 29 MARCH 2011
TOTAL ACRES 24.05
DEED REF: BOOK WD 122
TAX MAP 20 PARCEL

Christopher M. Vick, RLS #2164
VICK SURVEYING, LLC
 2772 Hidden Cove Road, Cookeville, TN 38512-1256

GENERAL INFORMATION:
 1. Christopher M. Vick, hereby certifies that this map was drawn under my supervision from an actual GPS survey made under my supervision and the following information was used to perform the survey:
 (a) Type of Survey: Real Time Kinematic
 (b) Positional Accuracy: 0.25 feet
 (c) Date of survey: 29 March 2011
 (d) Datum/EPOCH: NAD83(2011) Epoch 2010.00
 (e) Published/Unpublished control used: 1001 0052 1010101
 (f) Grid Model: Geoid08
 (g) Combined grid factor(s): 0.88924108